



# Innovate

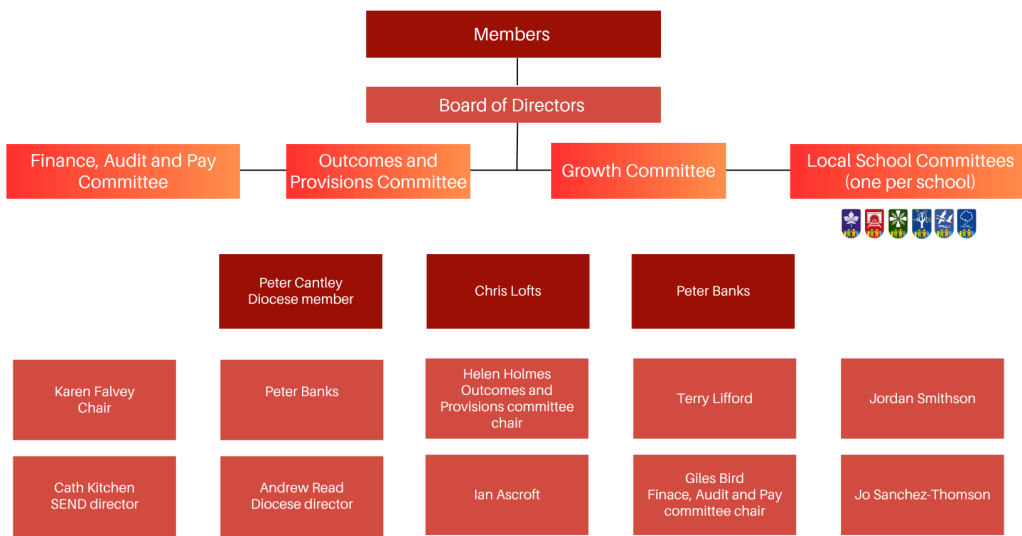
## Multi Academy Trust

Aspiration, Inclusivity, Kindness, Resilience

### iMAT Governance Arrangements

#### iMAT Governance Structure

Aspiration, Inclusivity, Kindness, Resilience



**Members:** The role of Members is to hold the Trustees to account, assure themselves that the governance of the Trust is effective, and that Trustees are acting in accordance with the Trust's charitable object(s). Members are not involved in the day-to-day business of the Trust. However, Members have key powers, including the appointment and removal of Trustees and amending the Memorandum & Articles of Association.

**Board of Directors:** The Board of Directors is the legally responsible and accountable body for every academy. The Board holds and fulfils all statutory responsibilities by approving and monitoring the implementation and impact of network-wide educational and financial plans, including the budget. The Board sets the strategic plan for the trust and schools. The Board holds legal liability for areas that would normally be the responsibility of an academy governing body, such as the Single Central Register and policies, with support from the central team. While the Board may delegate many of its functions (for example to the Leadership Team or a Board Committee), the Board remains accountable for these functions. iMAT has a nominated Safeguarding Trustee (Helen Holmes) and a nominated SEND and Inclusion Trustee (Cath Kitchen).

**Trust Committees:** Through the Scheme of Delegation, the Board delegates authority and responsibility for a range of duties to the following committees:



Aspiration, Inclusivity, Kindness, Resilience



# Innovate

## Multi Academy Trust

Aspiration, Inclusivity, Kindness, Resilience

- Finance, Audit and Pay committee: Monitoring and reviewing audit, compliance, risk management and internal controls. Monitoring and reviewing annual budgets, long-term financial strategy and planning, investment and reserves, pensions and financial submissions.
- Outcomes and Provisions committee: Monitoring, scrutinising and advising on educational performance and strategy. Monitoring, scrutinising and advising on safeguarding, SEND and inclusion.
- Growth committee: monitoring opportunities for networking and local partnerships, as part of iMAT's growth strategy

**Local Governance - Local School Committees:** (New name for Local Governing Bodies): Providing insight into the experiences of pupils, parents, staff and the wider community and responsible for localised challenge and support on community-facing aspects of the school but with no legal liability or final approval of trust policies or core documents. They also lead on local stakeholder engagement (students, parents/carers, staff and community). LSC members have delegated authority to conduct panel reviews of matters such as complaints, exclusions and HR matters. LSC members discuss standards and inclusion at a local level, but final oversight for these areas lies with the Trust Board.



Aspiration, Inclusivity, Kindness, Resilience